

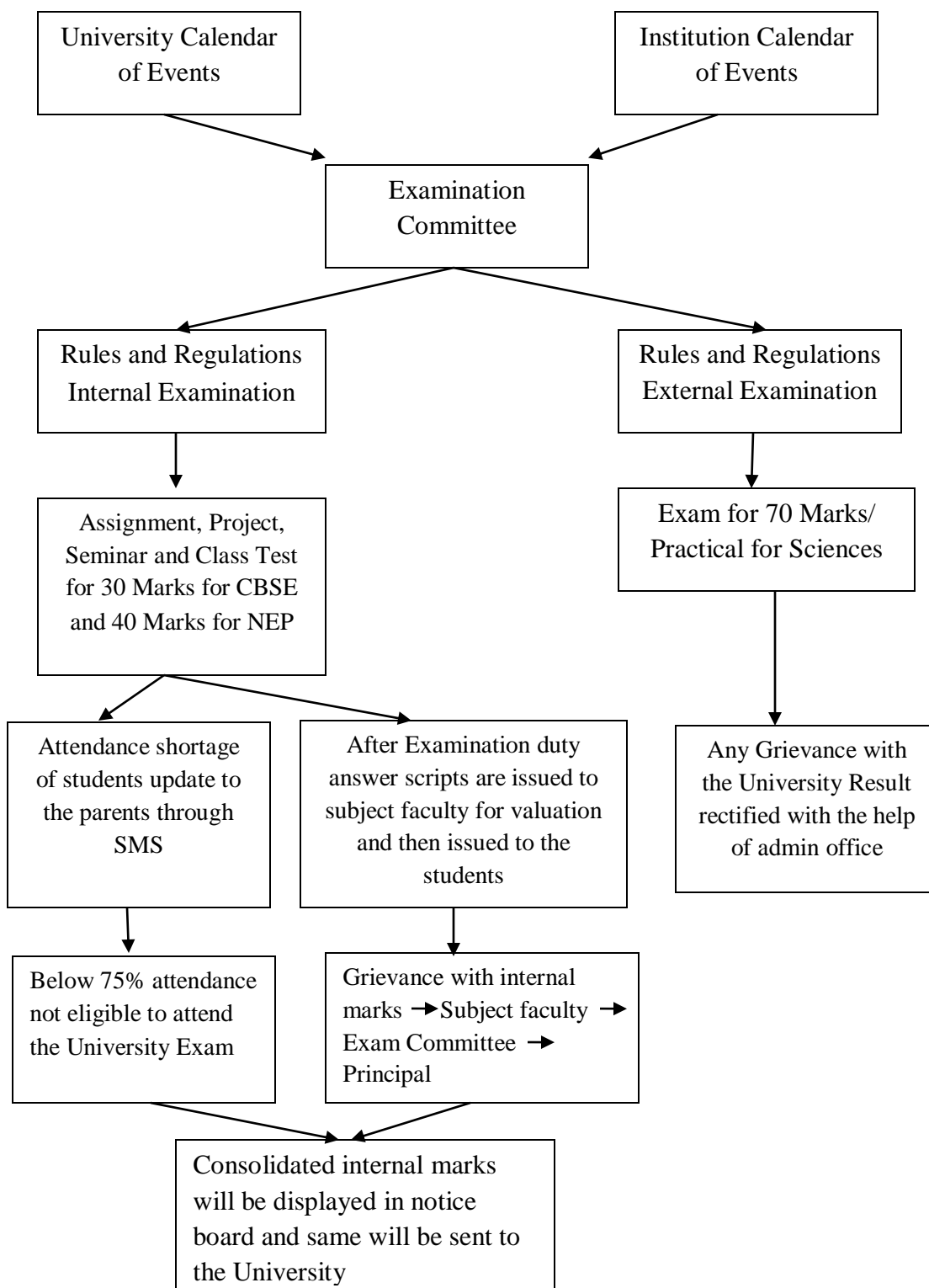


Sri Bhagawan Mahaveer Jain First Grade College

Geetha Road, Robertsonpet, Kolar Gold Fields

Accredited by NAAC with B⁺ Grade

Mechanism of internal assessment is transparent and robust in terms of frequency and variety





Sri Bhagawan Mahaveer Jain First Grade College

Geetha Road, Robertsonpet, Kolar Gold Fields

Accredited by NAAC with B⁺ Grade

Supporting Document for Criteria 2.5.1

Question 2.5.1.- Mechanism of Internal Assessment is transparent and robust in terms of frequency and mode.

Sl/No.	List Name	Link
01.	University Calendar of Events	https://www.sbmjckgf.in/wordpress/wp-content/uploads/2022/11/unvcal.pdf
02.	Institution Calendar of Events	https://www.sbmjckgf.in/wordpress/wp-content/uploads/2022/11/Calendar-of-Events-2021-2022.pdf
03.	Examination Committee	https://www.sbmjckgf.in/wordpress/wp-content/uploads/2022/11/EXAM-COMMITTEE.pdf
04.	Examination Minutes of Meeting Committee	https://www.sbmjckgf.in/wordpress/wp-content/uploads/2022/11/mom.pdf
05.	Circular	https://www.sbmjckgf.in/wordpress/wp-content/uploads/2022/11/circular.pdf
05.	Time Table	https://www.sbmjckgf.in/wordpress/wp-content/uploads/2022/11/Time-Table-Final.pdf
06.	Room Allotment	https://www.sbmjckgf.in/wordpress/wp-content/uploads/2022/11/Room-Allotment.pdf

07.	Invigilator Diary	https://www.sbmjckgf.in/wordpress/wp-content/uploads/2022/11/Invigilator.pdf
08.	Student Absentees List	https://www.sbmjckgf.in/wordpress/wp-content/uploads/2022/11/Absentees-Statement-.pdf
09.	Internal Marks Allotment	https://www.sbmjckgf.in/wordpress/wp-content/uploads/2022/11/Internals.pdf
10.	Grievance	https://www.sbmjckgf.in/wordpress/wp-content/uploads/2022/11/grievance.pdf
11.	Consolidated internal marks displayed in notice board	https://www.sbmjckgf.in/wordpress/wp-content/uploads/2022/11/IA-MARKS.pdf